

CHERRYORCHARD

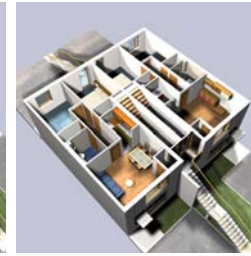


O'Mahony Pike were winners of a design competition sponsored by Dublin City Council to prepare proposals an affordable housing Development at Cherry Orchard.

The proposal for a minimum of 376 duplex units, apartments and town houses involved the design of a precast concrete construction system which reduced the building programme by a minimum of 30%, while still producing quality and economical contemporary housing.



1. ground floor



2. first floor



3. second floor



4. third floor



5. external render

