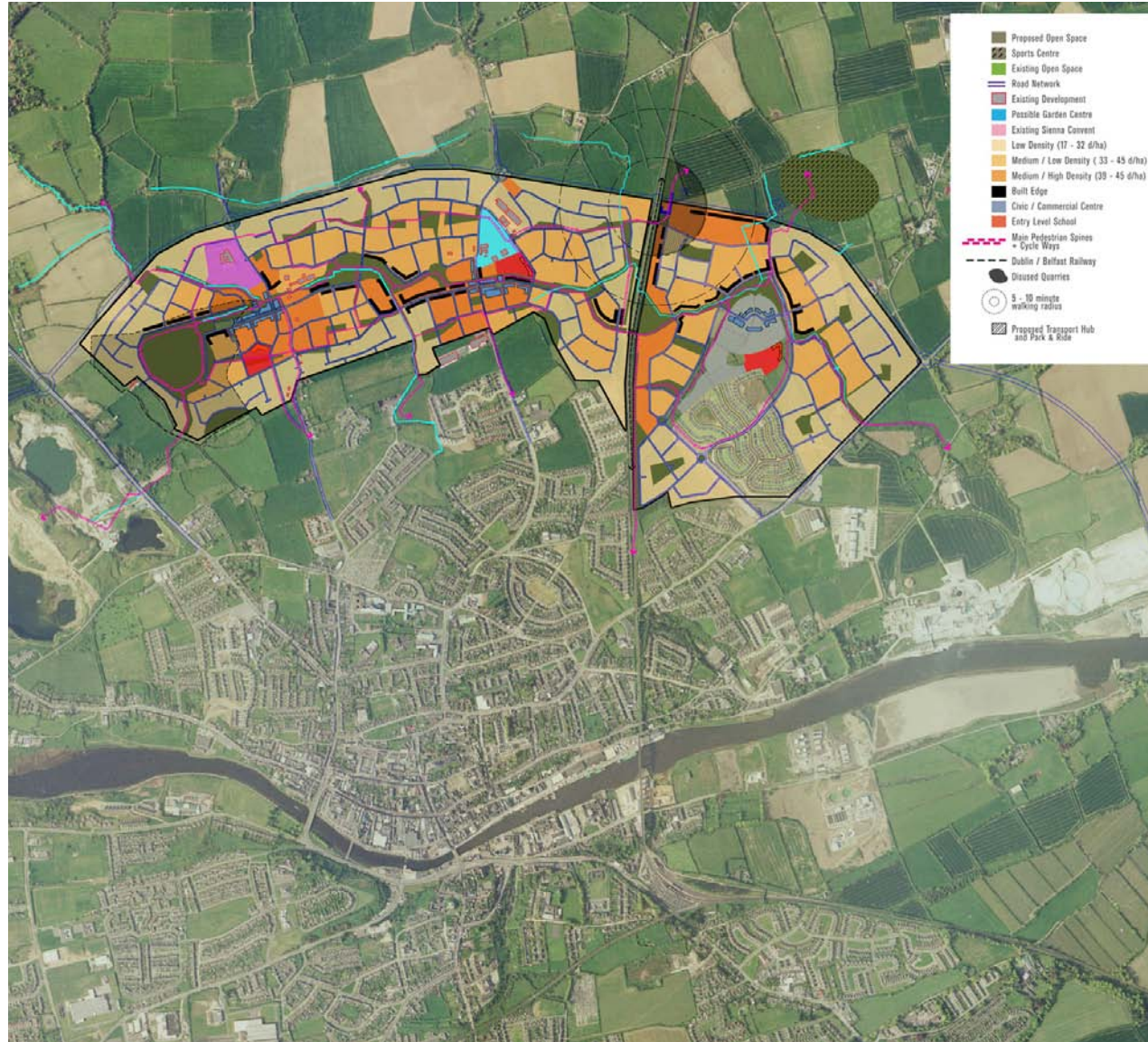


NORTH DROGHEDA ENVIRONS MASTERPLAN

Town/City Expansion

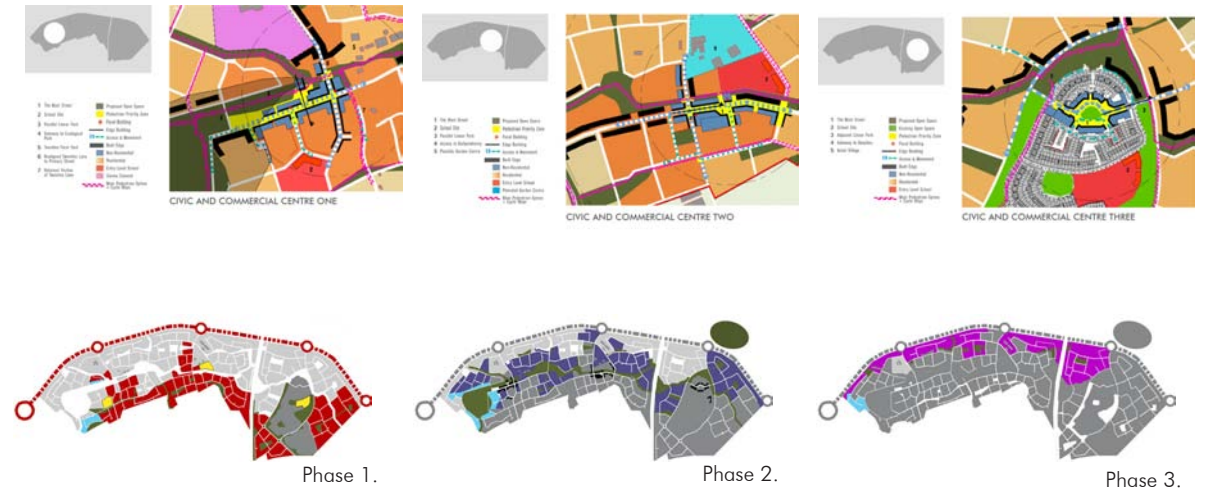


North Drogheda and Environs Local Area Plan, prepared by OMP, proposed that 3 new neighbourhoods to cater for a population of 20,000 people be developed on 254 hectares north of the town centre.

The proposed development will increase the population of Drogheda by 40%. It also includes the provision for three schools, community facilities and open space. The brief was to develop a spatial masterplan to provide for the sustainable development of these lands to form three separate but integrated residential districts approximately 2km north of Drogheda town centre.

Amongst the primary elements identified in the Local Area Plan and accommodated within the masterplan were the provision of a Northern Cross Route, a substantial east-west linear park and three proposed civic and commercial centers - one for each of the identified residential neighbourhoods. These would become the generators of a new integrated northern extension of the town of Drogheda.

The masterplan is committed to the development of a self-sustaining community within the subject lands that retains strong links to the town of Drogheda.



North Drogheda Masterplan: O'Mahony Pike Architects